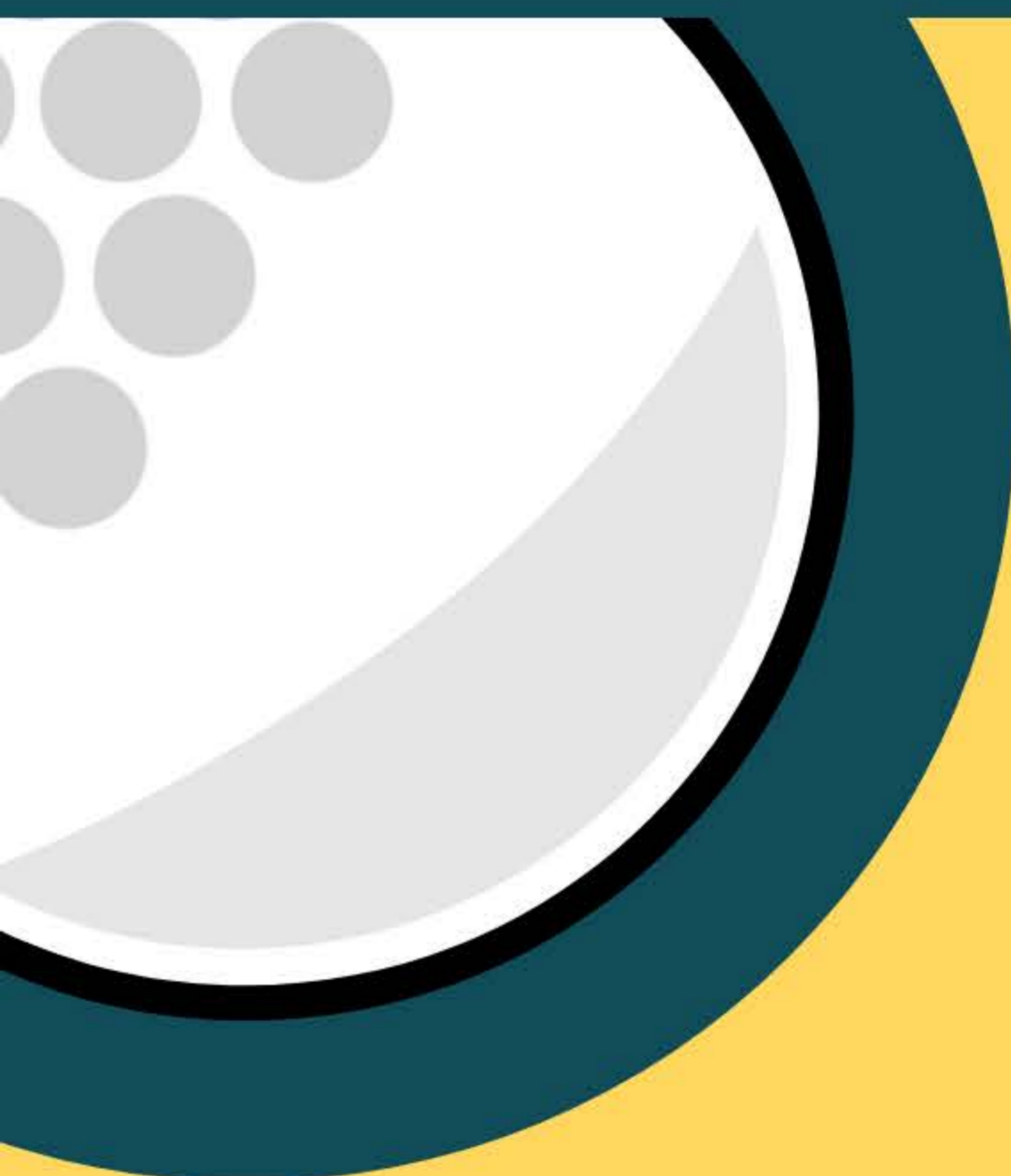




THE BLUE RIDGE

The Blue Ridge is an annual Ladies Charity Golf Tournament hosted by Mountain Glen Golf Course in Newland NC every Fall season

The funds raised will go to assist the local Avery County Golf programs. The Blue Ridge strives to assist the growth and development of youth programs across the Blue Ridge Mountains



MOUNTAIN GLEN'S STORY

Designed by the legendary George Cobb, Mountain Glen is one of the premier public courses in western North Carolina. Nestled just outside the quiet town of Newland, summer temperatures rarely rise above 80 degrees. These ideal summer conditions allow Mountain Glens bent grass greens to flourish. With Championship tees reaching 6500 yards, Mountain Glen can be fun and challenging for all skill levels. Having hosted hundreds of regional and national tournaments, Mountain Glen is truly a hidden gem.

MOUNTAIN GLEN GOLF COURSE

1 CLUB HOUSE DR
NEWLAND NC 28657
(828) 733-5804
www.mountainglengolfclub.com

CONTACT DETAILS

Tournament Lead
Beth Hill-bethchill@gmail.com
Director of Golf
David Burleson-(828) 733-5804

FORMAT 2 PERSON TEXAS SCRAMBLE

TEAMS FLIGHTED BY COMBINED HANDICAP
(8 PLAYERS HANDICAP WILL BE ADJUSTED WITHIN 8 OF A PLAYER)

COST \$75 PER PLAYER

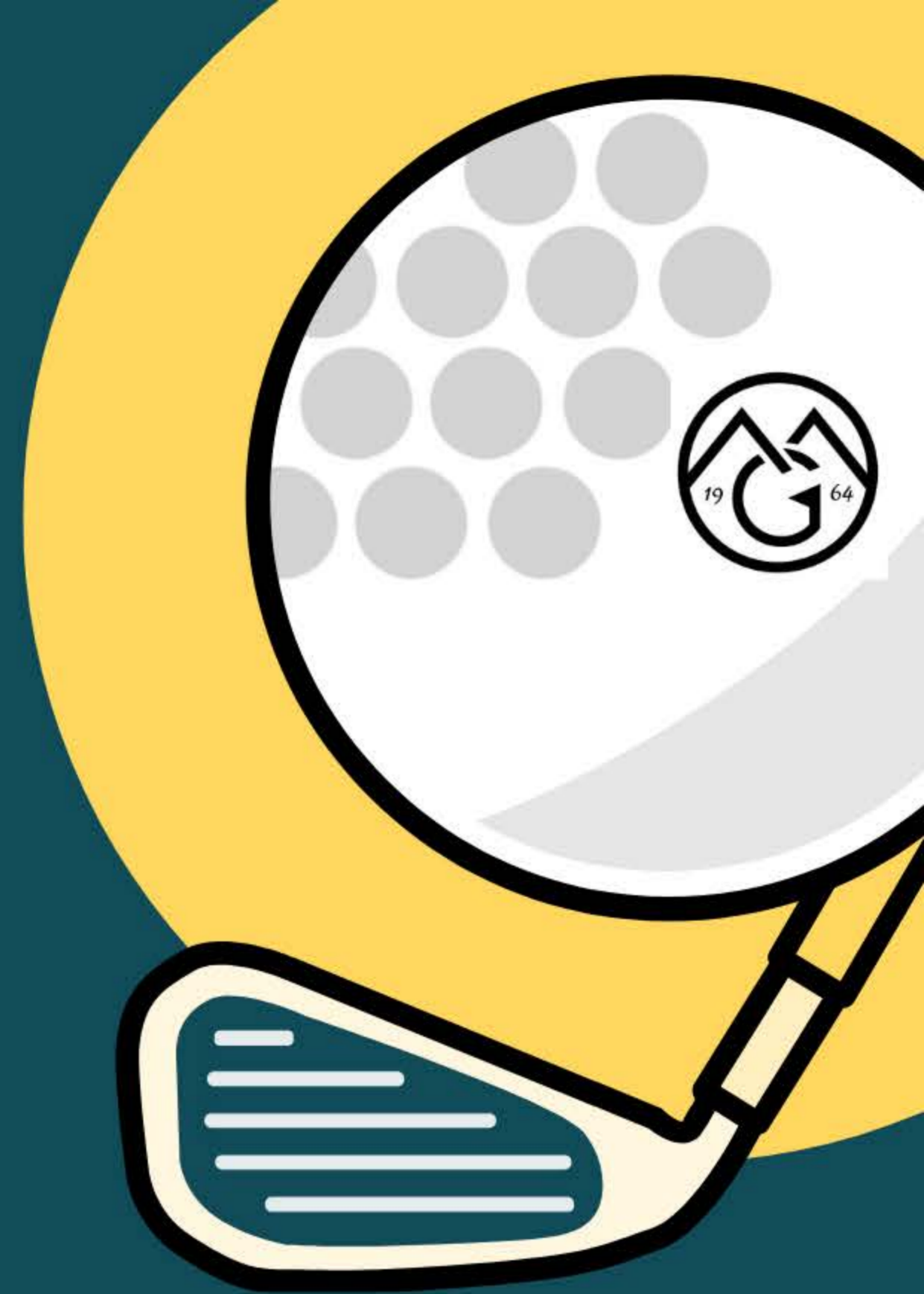
SCHEDULE

7:30 CHECK IN OPENS
7:45 GRAB & GO BREAKFAST OPENS
8:50 PLAYERS TO THEIR CARTS
9:00 SHOTGUN
1:15 CHAMPIONS LUNCHEON
FOLLOWED BY AWARD PRESENTATION

INCLUDED

Golf & Cart Fees Prizes
Breakfast Goodie Bag
Luncheon Range Balls

**DONATIONS/CONTRIBUTIONS
PERSONS UNABLE TO PARTICIPATE IN THE
TOURNAMENT, BUT STILL WANTING TO
MAKE A DIFFERENCE MAY CONTACT
BETHCHILL@GMAIL.COM**



THE FIRST ANNUAL BLUE RIDGE LADIES INVITATIONAL

MOUNTAIN GLEN
GOLF COURSE

SEPTEMBER 7TH
9:00AM

REGISTRATION

Player

Phone Number

GHIN #

Player

Phone Number

GHIN #

EMAILS *Optional*

Please complete entry form above return and enclose with your check to:
Mountain Glen Golf Club- BRLI
P.O. Box 326
Newland, NC 28657

Thank you so much for wanting to be a part of this fabulous event. Everyones participation and contributions will truly make a difference in our local youth programs.
-BRLI Committee-